

# OH BOY!

Director **Olivier Letellier**

Adapted from the novel by **Marie-Aude Murail**

Adaptation for the stage by **Catherine Verlaquet**

English translation by **Nicholas Elliott**

Actor **Lionel Erdogan** or **Guillaume Fafiotte** (FR), **Matthew Brown** (USA)

Sound designer **Mikaël Plunian**

Lighting designer **Lionel Mahé**

Stage manager **Laurent Labarrère** (FR), **Bill Kennedy** (USA)

## TECHNICAL REQUIREMENTS 2018

Show for all ages, from the age of 9

**Seating capacity: 180 spectators for school performances, 300 for the general public**

Duration of the show: 60 mn

Setup time: 2 1/2 shifts, pre-setting not included

Teardown time: 1 hour

*This data sheet is an integral part of the contract of transfer. Valid for agreement*

Place of signature: \_\_\_\_\_ Date of signature: \_\_\_\_\_

Stamp:                      Signature:

**For any additional information, please contact the company:**

**Théâtre du Phare - Olivier Letellier**

**Booking and Tour manager: Inès Le Gué / +33 (0)6 58 53 19 13 / [ines@theatreduphare.fr](mailto:ines@theatreduphare.fr)**

**Stage manager: Laurent Labarrère (FR) / +33 (0)6 84 49 84 62 / [lolabarrere@gmail.com](mailto:lolabarrere@gmail.com)**

**Bill Kennedy (USA) / +1 347 742 6166 / [bkbillkennedy@gmail.com](mailto:bkbillkennedy@gmail.com)**

**GENERAL REMARKS:****Plan of technical set-up**

To make a plan adapted to your stage and to define the exact list of the necessary material, please send us by e-mail, a ground plan and a scale drawing in the 1/50th (pdf format required). It must be in meters and US standard measurements.

**Théâtre du Phare's personnel on tour**

1 director, 1 actor, 1 stage manager, 1 tour manager and 1 company manager

**STAGE:**

**We require a stagehand/carpenter for the show run to trigger a rigging cue off stage (for the ping pong ball drop)!**

**Théâtre du Phare provides**

- 1 wardrobe
- 3 Light black boxes suspended from the grid
- A rigging device for some props (ping pong ball drop, Barbie dolls)
- A disco ball (diameter 40cm / 16") with 220 V AC, 50Hz motor AC, 50Hz

**Stage space**

The show is performed in a black box equipped with black legs and borders.

Minimum proscenium opening: 9 meters (29ft 6in 3/8)  
 Minimum depth: 7 meters (22ft 11in 5/8)  
 Minimum trim: 6 meters (19ft 8in 1/4)

- A black stage floor is required. Black dance flooring can be used if the floor is too rough, damaged or not black.
- Typical theatrical lighting units are used (Side lighting and units hung in the grid onstage and in the house)
- Wings lighting.
- Rope, straps and pulleys. Pipe and pipe clamp.
- **Phosphorescent adhesive strip**
- 35kg (77,16 pounds) of ballast

**Light and sound booth**

The stage manager of the company will carry out the light and sound cues for the show. Ideally, the light and audio consoles are placed in mix position of the performance space.

**The lighting to the right and the Audio to the left.**

Our computer with the MIDI keyboard will be set in the middle.

**LIGHTING:**

- The lighting for this show requires a standard complement of theatrical lights and accessories. Lighting console is supplied by the presenter. Previous shows have been saved using these consoles, **reading ASCII: Avab (Congo, Presto), ADB (Liberty, Freedom), ETC ION, or similar**
- 50 dimmers are used. (Check the ghost of the dimmers!)
- 3 light boxes are suspended from the onstage grid. The bulbs inside each box are 220V AC 50Hz (tube ARIC (tungsten lamp) and PAR 36) with French plug-ends.

**Presenter provides** (see the light plot)

- 7 transformers with 7 plugs adapters.
- Black Aluminum foil tape
- 3 light stand height: 2 x 2,50m (8ft 3in); 1 x 1,50m (4ft 11in) high.
- 7 floor unit base plats
- Color gel: Manufacturers – ROSCO: 114, 119 / LEE FILTERS: 200, 201, 202, 203, 249, 136, 134, 003

**SOUND:****Théâtre du Phare provides**

- 1 computer
- 1 sound card
- 4 RCA exits (face 1/2 – upstage 3/4) + 2 stereo cables: RCA / mono Jack, 2 stereo cables: Cannon / mono Jack

**Presenter provides** (see the light plot for speaker placement)

A sound system speced for the performance space is required. This includes audio console, subwoofer and a minimum of 2 speakers are positioned upstage left and right (east / west). They are not used as stage monitors and they are controlled with fader. These two speakers must have a good capacity for bass frequencies.

- 4 D.I. boxes
- 1 mic stand
- Clear-com for the Théâtre du Phare stage manager and Stagehand/Carpenter off stage left.

**DRESSING ROOM AND COSTUMES**

- Dressing room with all facilities: heating, sanitary, shower. 1 table, 2 chairs.
- A sofa where the actor can rest.
- Sweet and salty snacks including cold beverages (water, fruit juice) and hot drinks (tea, coffee), fresh season fruit, cereal bars...
- Please choose fresh organic food when possible.
- Two bottles of water per day.
- For the cleaning of the costumes: We need an iron and ironing board. If there are more than two shows, it will be necessary to plan a costume person to wash and get the costume ready until our last show.

**SCHEDULE AND STAFF:**

**We really need specialized technicians, managers (Sound, Light and Stage) who know perfectly their material and their theatre.**

**A preliminary dialogue is necessary for the establishment of the definitive schedule.**

**Staff:**

4 technicians: 1 Stagehand/Carpenter, 1 Sound master, 1 Light master and 1 Electrician.

**Before Load-in:**

**Lighting can be pre-hung if possible.**

**Schedule: Load in day**

	Sound master	Light master	Electrician	Stagehand
9AM – 12PM Set-up and lay out wardrobe, Hang light boxes		*	*	*
12PM - 1PM Check patch and beginning light infocus		*	*	*
2PM – 4.30PM Finish lighting focus, Audio set-u and booth installation	*	*	*	*
4.30PM – 5PM Sound check	*	*	*	
5PM – 5.30PM Light and sound cue sheet	*	*	*	
5.30PM -- 7PM Run-through	*	*		*
7.30PM -- 8PM Preset	*	*		*
Show (the next day)	*	*		*

Note: The load-in will begin at 8AM if the show is on the same day.

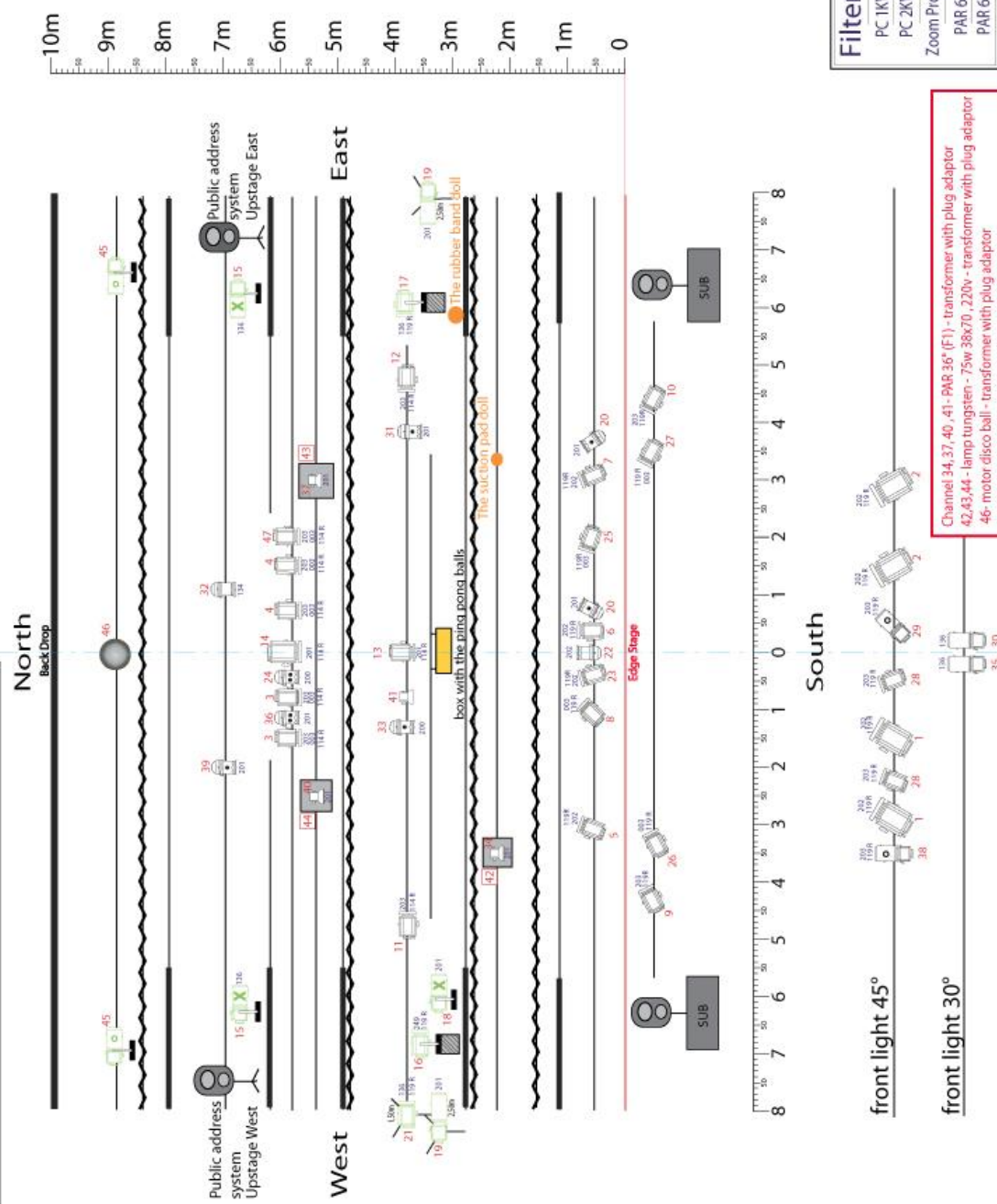
# Company Théâtre du Phare

## "Oh boy !"

**Stage manager :** LauRent Labarrère  
 +33 6 84 49 84 62  
 lolabarrere@gmail.com

**Bill Kennedy**  
 347-742-6166  
 bkbilkennedy@gmail.com

**Theatre**  
 50 Dimmers 2KW  
 linear curve TV  
 Channel in **Red**  
 Gel in **Blue**  
 On floor in **Green**



- 5 Plano Convexe (PC) 2 KW
- 24 Plano Convexe (PC) 1 KW
- 3 Zoom Profile 613 SX (au sol)
- 4 Zoom Profile 614 SX
- 4 Zoom Profile 614 SX + IRIS
- 2 PAR 64 CP 60
- 5 PAR 64 CP 61
- 2 PAR 64 CP 62
- 7 floor unit base plates
- 3 lightstand height : 2x 2,50m(8'3")  
1x 1,50m(4'11")
- Leg and Back drop  
Border
- Public address system  
adapted at your stage
- Principal public address for  
the audience - not stage monitor

**Company Théâtre du Phare**

- Disco Ball - outside diameter 1'4" - with his motor, 220V, 50Hz
- Set suspended box for every boxes
- box on floor
- 4 PAR 36 (F1) - 220V, 50Hz

Filters	Reco		Lee		Lee		Lee		Lee	
	114 R	119 R	200	201	202	203	134	136	249	003
PC 1KW	8	15	2	3	11	2	1	2	1	10
PC 2KW	1	4	1	4						
Zoom Profile			2	3	2	4				
PAR 64			2	4	1	1				
PAR 64					3					